

SPECIFICATIONS
FOR
“IHI” MODEL CCH2500-6
FULLY HYDRAULIC CRAWLER CRANE

IHI

IHI Construction Machinery Limited

TOKYO, JAPAN

1. GENERAL

This specification covers the Standard Specifications for IHI Model CCH2500 crawler crane.

2. OUTLINE

CCH2500 is of a Crawler Mounted Crane equipped with a latticed type tubular boom, that has been developed for Lift Crane work. This crane consists of the crawler undercarriage, the slewing superstructure and the crane boom in main construction. CCH2500 is powered by the diesel engine installed on the slewing superstructure as it's power source, and the power is transferred through the fully hydraulic drive/control system.

3. MAIN UNIT SPECIFICATION

(1) Dimensions

Overall crawler crane width:	7,770 mm
Overall crawler width:	7,770 mm
Crawler width center to center:	6,700 mm
Crawler shoe width:	1,070 mm
Overall crawler length:	9,160 mm
Rear end slewing radius:	6,000 mm
Boom foot pin height from ground level:	2,655 mm
Boom foot pin distance from slewing center:	1,600 mm
Rear end ground clearance:	1,630 mm
Min. ground clearance:	470 mm
Overall cab width (when on transportation):	3,200 mm
A-frame height (extended/sheave O.D.):	8,959 mm
A-frame ground clearance (folded/sheave O.D.):	3,775 mm

(2) Main Specifications

Slewing speed:	1.5min ⁻¹ (constant speed: 0.6 min ⁻¹)
Travel speed:	0.9/0.6 km/hr
Grade ability:	30% (16.7°)

Engine

Manufacturer:	Cummins Inc.
Model:	QSL
Emission Certification:	U.S.EPA Tier3,CARB Tier3,EU StareIII A
Type:	4-cycle, water-cooled, turbocharged and air cooled
Rated output:	242kW / 2,000min ⁻¹
Total displacement:	8.9L
Fuel tank capacity:	510L
Battery:	12V×120AH×2 pcs.

Hoisting Winch System (Main Hoist, Auxiliary Hoist)

Hydraulic motor:	Axial piston type
Reduction gear:	Two-stage planetary gear(drum in type)
Hoist drum:	Individual drums. Main/Auxiliary drum in same width, with lebus type groove.
Brake:	Wet type multi disc
Drum locks:	Ratchet type
Max. line pull:	242kN
Rated line pull:	132kN

※Free fall brake is optional specifications

Boom Hoisting Winch System

Hydraulic motor:	Axial piston type
Reduction gear:	Three-stage planetary gear(drum in type)
Hoist drum:	Dual drum, with lebus type groove
Brake:	Wet type multi disc
Drum lock:	Ratchet type

3rd Hoisting Winch System (※Special specifications)

Hydraulic motor:	Axial piston type
Reduction gear:	Two-stage planetary gear(drum in type)
Hoist drum:	Drum with lebus type groove
Brake:	Wet type multi disc
Drum lock:	Ratchet type

Slewing

Hydraulic motor:	Axial piston type (Double)
Reduction gear:	One-stage planetary gear + spur gear (Double)
Slewing bearing:	Single row ball bearing type
Brake:	Wet type multi disc
Swing lock:	Pin type

Traction

Hydraulic motor:	Axial piston type with brake valve
Reduction gear:	3-stage planetary gear, shoe-in type
Crawler shoe:	Semi-open type
Parking brake:	Wet type multi disc

Main Pump

Axial piston pump:	3pcs.
--------------------	-------

Control Pump

Gear pump:	2pcs.
------------	-------

Cylinder circuit Pump

Gear pump:	1 pc.
------------	-------

4. MAIN STRUCTURE

(1) Power Driving System

The hydraulic pumps are driven directly by a diesel engine installed on the rear right side part of the slewing superstructure.

Three variable-displacement piston pumps are installed to actuate load hoisting, traction and provided for slewing and boom hoisting motors.

Three gear pumps are control circuit and auxiliary use.

Full power control system is introduced in circuit between three variable-displacement piston pumps, so as to utilize the engine output efficiently.

Fine speed control system is incorporated as standard-equipped in the variable-displacement pump to set a stepless regulation from the minimum to the maximum of pump displacement. With the speed control lever being manipulated, any required operational speed can be obtained from delicate inching operational speed to the maximum speed.

(2) Hoisting Winch System

The main and auxiliary drums are installed independently, and each driven by separate hydraulic motor through reduction gears which was had built-in by a drum respectively to hoist and lower the hook. Rope speed can be adjusting and controlled steplessly as winch speed control volume and per change of the stroke of control lever. Fine speed control system is standard equipped for positive inching operation.

The main and auxiliary winch lowering is made by power, and safety braking is ensured by the automatic braking.

Ratchet type drum locks are provided with both main and auxiliary hoist drum.

(3) Boom Hoisting Winch System

Boom hoist drum is driven by the independent hydraulic motor through reduction gear to permit the independent boom hoisting operation apart from the other operational movements.

Rope speed can be adjusted and controlled steplessly as winch speed control volume and per change of the stroke of control lever.

Boom lowering is made by power, and safety braking is ensured by the automatic braking and the ratchet type drum lock.

(4) Slewing System

Superstructure is slew by hydraulic motor through reduction gear independently from other operations, and is supported by the slewing base of a ball single row type which ensures smooth acceleration and stop of the slewing without causing oscillation of the suspended load.

The slewing parking brake and swing lock are equipped for safety during crane is in cease operation or in traveling.

(5) Traction System

Traction force is generated by two hydraulic motors through reduction units which are installed on both crawlers. Pivot-turn and spin-turn is easily operated.

Traction brake is of self-pressurized hydraulic brake which is automatically engaged with the control levers being at the neutral position. Reduction unit and hydraulic motor is housed within the shoe width, which permits smooth traction available on uneven ground. The crawler shoe belt tightening adjustment is very easy with grease cylinder.

(6) Control Lever

The remote control valve is incorporated in circuit of the control lever for hoisting, boom hoisting, slewing and traction to actuate the main control valve for light touch sensitive control without operator's fatigue. Combined simultaneous operation is possible for the four movements of main and auxiliary hoisting/lowering, boom hoisting/lowering and slewing.

Automatic locking device provided, which prevent any trouble from miss-engagement by touch of control lever when operator get off and on from operator's room.

(7) Operator's Cab

The operator's cab is positioned on the front-right hand side of the superstructure, and is completely independent from the machine room for quiet operation.

The cab is designed to meet with ISO standard, having cab construction of 940 mm in width and of inner linings.

The windows are provided with 5 sides of front, rear, right, left and ceiling of the cab.

The right and left windows are of sliding type. The door is of a sliding type.

(8) OK Monitor

OK Monitor is provided on the instrument panel in the cab for centralized monitoring of machine operating conditions at a glance without leaving the operator's seat.

(9) Boom

Boom is made of high-tensile steel tube, with 18m basic boom in length (9m inner and 9m outer boom).

Standard boom can be extended upto 72m in maximum length by jointing 3m, 6m and 9m insert boom sections.

Light boom can be extended from 72m upto 93m in maximum length by jointing taper insert boom and 3m, 6m TW-insert jib boom and TW-outer jib boom sections.

Auxiliary jib, and 13m to 37m jib can be equipped with crane boom. Joint for boom and jib is of a pin joint type.

Pendant rope is of a single lock type for easier handling on assembling and disassembling of boom.

5. CRANE SPECIFICATION

(1) Specifications

Maximum lifting capacity × working radius:	250 ton × 5.2 m
Standard boom length:	18 m ~ 72 m
Light boom length:	72 m ~ 93 m
Maximum boom length with Jib boom:	109 m (72 m standard boom + 37 m jib boom)

Rope speed

hoisting/lowering:	※120 m/min
Boom hoisting/lowering:	※34 m/min × 2

Note: The value marked with “※” will be changed according to the loads given.

Rope part lines

250t / 135t combination hook:	16 part lines / 10 part line (Additional boom point sheave-block is necessary to use over 11 part lines)
13.5t hook:	1 part line
Boom hoist:	20 part lines

Standard counterweight:	92.0 ton
Carbody weight:	19.0 ton

Crane total weight:	Approx. 210 ton (with 18 m boom)
Average ground bearing pressure:	113 kPa (1.15 kgf/cm ²)

(2) Boom And Jib Combination

Jib Length (m)	Standard boom length (m)																		
	18	21	24	27	30	33	36	39	42	45	48	51	54	57	60	63	66	69	72
Aux.	⊙	⊙	⊙	⊙	⊙	⊙	⊙	⊙	⊙	⊙	⊙	⊙	⊙	⊙	⊙	⊙	⊙	⊙	⊙
13										⊙	⊙	⊙	⊙	⊙	⊙	⊙	⊙	⊙	⊙
19										⊙	⊙	⊙	⊙	⊙	⊙	⊙	⊙	⊙	⊙
25										⊙	⊙	⊙	⊙	⊙	⊙	⊙	⊙	⊙	⊙
31										⊙	⊙	⊙	⊙	⊙	⊙	⊙	⊙	⊙	⊙
37										⊙	⊙	⊙	⊙	⊙	⊙	⊙	⊙	⊙	⊙

Jib Length (m)	Light boom length (m)							
	72	75	78	81	84	87	90	93
Aux.	⊙	⊙	⊙	⊙	⊙	⊙	⊙	

(3) Wire Rope

Purpose	Rope dia (mm)	Breaking Strength(kN)	Rope Type
Load hoisting *1	φ 28	688	P·S(19)+39×P·7
Load hoisting *2	φ 28	674	IWRC 6×P·WS(36)
Boom hoisting	φ 22.4	356	IWRC 6×WS(31)
Boom suspension	φ 36	1150	IWRC 6×P·WS(36)
Jib load hoisting	φ 28	688	P·S(19)+39×P·7
Jib boom suspension	φ 28	585	IWRC 6×Fi(29)
Jib strut suspension	φ 34	1020	IWRC 6×P·WS(36)

Note : Designed and rated to comply with EN13000

*1:Use for 200t loads and below.

*2:Use for over 200t loads.

Max. lifting capacity by reeving

(unit: ton)

Part line Hook	1	2	3	4	5	6	7	8	9	10	11	12	13	14	15	16
250t	-	-	-	-	-	-	-	-	-	-	148.5	162.0	175.5	189.0	202.5	250.0
200t	-	-	-	-	-	-	-	-	-	-	148.5	162.0	175.5	189.0	200.0	200.0
135t	13.5	27.0	40.5	54.0	67.5	81.0	94.5	108.0	121.5	135.0	-	-	-	-	-	-
125t	13.5	27.0	40.5	54.0	67.5	81.0	94.5	108.0	121.5	125.0	-	-	-	-	-	-
90t	13.5	27.0	40.5	54.0	67.5	81.0	90.0	-	-	-	-	-	-	-	-	-
60t	13.5	27.0	40.5	54.0	60	60	-	-	-	-	-	-	-	-	-	-
35t	13.5	27.0	35.0	-	-	-	-	-	-	-	-	-	-	-	-	-
13.5t	13.5	-	-	-	-	-	-	-	-	-	-	-	-	-	-	-

(4) Attachment Arrangement

As for the case with two kinds of mentions, the combination of the upper section is recommended boom constitution.

Crane boom arrangement

Boom length	Standard boom arrangement	Boom length	Standard boom arrangement
18m		48m	
21m		51m	
24m		54m	
27m		57m	
30m		60m	
33m		63m	
36m		66m	
39m		69m	
42m		72m	
45m			

Boom length	Light boom arrangement
72m	
75m	
78m	
81m	
84m	
87m	
90m	
93m	

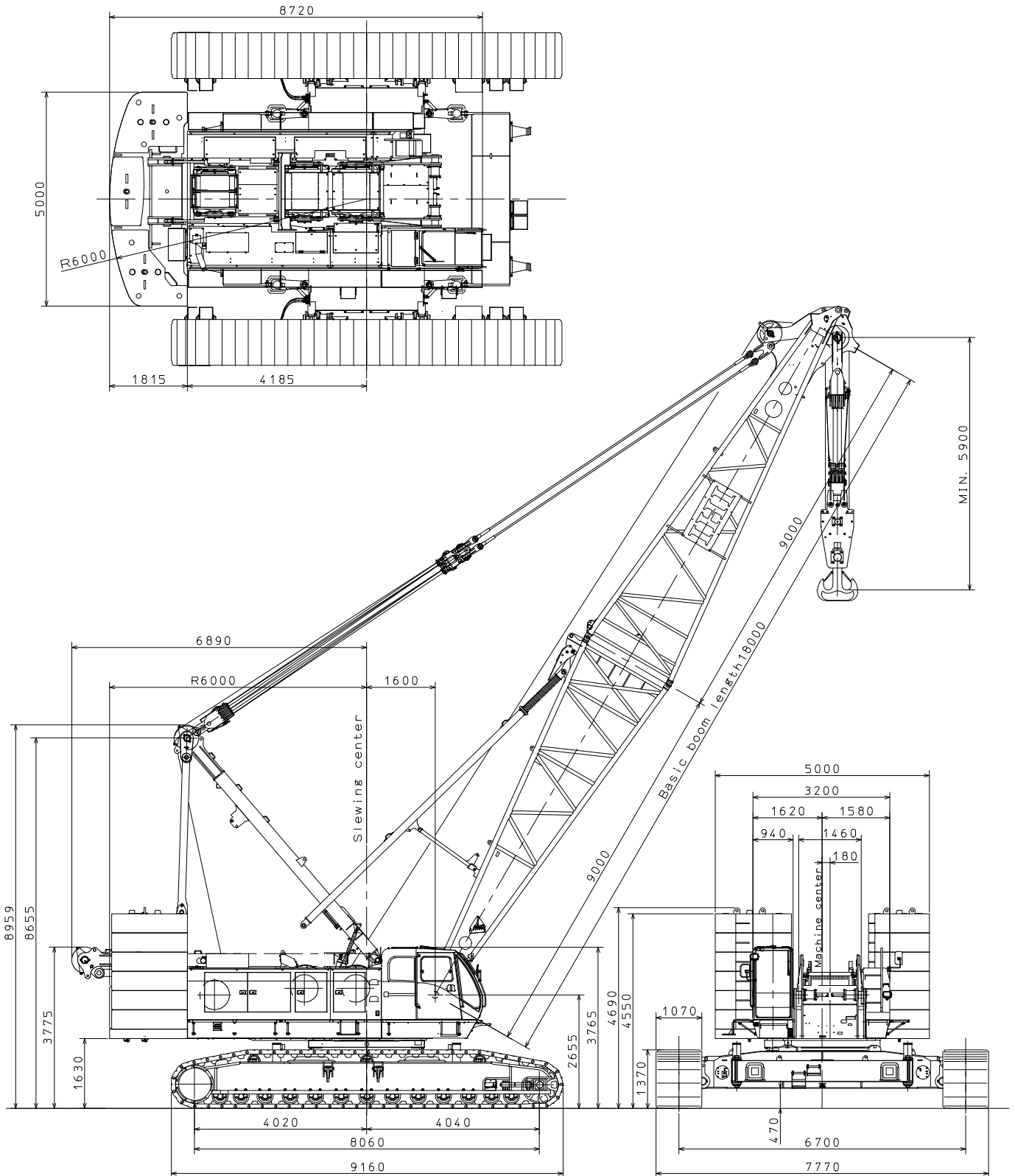
Crane jib arrangement

(impossible of the equipment for a light boom)

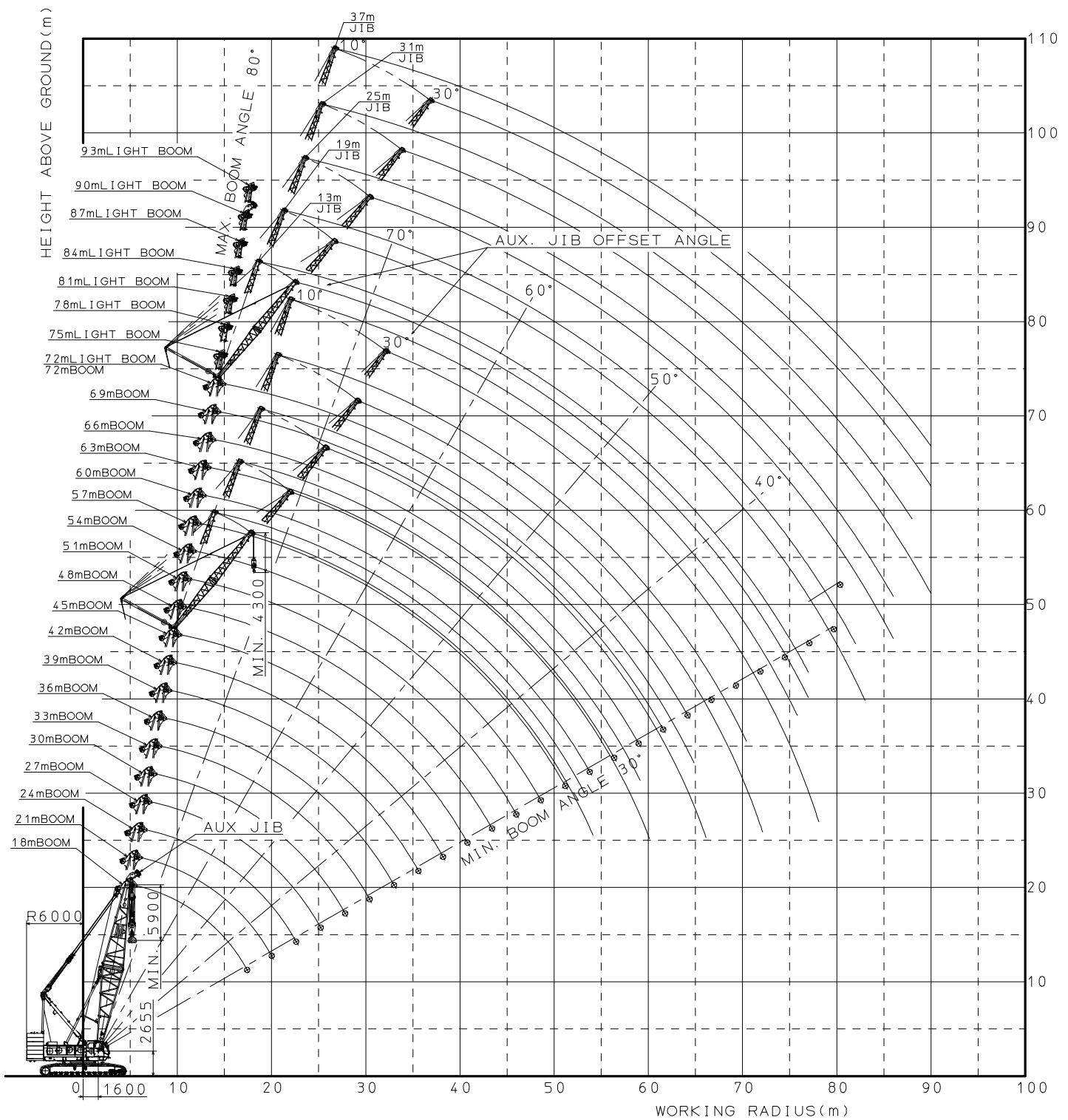
Jib length	Jib arrangement
13m	
19m	
25m	
31m	
37m	

○ mark: Normal guide-roller position
 ☆ mark: Additional guide-roller position

(5) General Dimensions



(6) Working Ranges Diagram



(7) CRAWLER CRANE RATED LIFTING LOADS

STANDARD BOOM RATED LIFTING LOADS(92.0t Counterweight + 19.0t Carbody weight)

unit: ton

Boom length(m) Working radius(m)	18.0		21.0		24.0		27.0		30.0		33.0		36.0		39.0		42.0		Boom length(m) Working radius(m)
	Load	Angle	Load	Angle	Load	Angle	Load	Angle	Load	Angle	Load	Angle	Load	Angle	Load	Angle	Load	Angle	
5.0	5.2mx 250	80.0	5.7mx 205.0	80.0															5.0
6.0	192.0	77.3	192.0	79.2	6.2mx 183.0	80.0	6.7mx 175.0	80.0											6.0
7.0	166.2	74.0	166.0	76.4	166.0	78.1	165.5	79.4	7.3mx 155.5	80.0	7.8mx 144.2	80.0							7.0
8.0	146.2	70.6	146.0	73.5	145.8	75.6	145.6	77.3	145.5	78.6	142.1	79.6	8.3mx 135.0	80.0	8.8mx 125.0	80.0			8.0
9.0	130.8	67.2	130.4	70.6	130.2	73.1	129.9	75.1	127.5	76.6	128.0	77.8	126.0	78.9	122.6	79.7	9.3mx 112.5	80.0	9.0
10.0	119.6	63.7	118.2	67.7	117.8	70.6	117.2	72.9	115.5	74.6	115.0	76.1	114.5	77.2	112.6	78.2	107.2	79.1	10.0
12.0	93.9	56.2	93.8	61.6	92.6	65.4	92.3	68.3	92.0	70.6	91.7	72.4	91.6	73.9	91.3	75.2	91.1	76.3	12.0
14.0	75.7	47.9	75.4	55.1	75.2	60.0	75.1	63.6	74.3	66.5	74.1	68.7	74.0	70.6	73.9	72.1	73.8	73.5	14.0
16.0	63.2	38.4	62.9	48.0	62.7	54.2	62.5	58.8	61.7	62.2	61.6	64.9	61.5	67.2	61.3	69.0	61.2	70.6	16.0
18.0	17.4mx 55.2	30.0	54.1	39.9	53.8	48.0	53.4	53.6	52.6	57.7	52.4	61.0	52.4	63.6	52.1	65.8	52.0	67.6	18.0
20.0			47.2	30.0	46.9	41.1	46.7	48.0	45.7	53.1	45.5	56.9	45.5	60.0	45.2	62.5	45.1	64.6	20.0
22.0					41.4	32.9	41.2	41.9	40.4	48.0	40.1	52.6	40.0	56.2	39.7	59.1	39.6	61.6	22.0
24.0					22.6mx 39.8	30.0	36.2	34.9	36.0	42.6	35.9	48.1	35.6	52.3	35.4	55.6	35.2	58.4	24.0
26.0							25.2mx 33.9	30.0	32.4	36.5	32.2	43.1	32.2	48.1	31.8	51.9	31.6	55.1	26.0
28.0									27.8mx 29.6	30.0	29.2	37.7	29.2	43.6	29.0	48.1	28.6	51.7	28.0
30.0											26.6	31.4	26.6	38.7	26.4	43.9	26.2	48.1	30.0
32.0										30.4mx 26.1	30.0	24.3	33.1	24.2	39.5	24.0	44.3		32.0
34.0												33.0mx 23.1	30.0	22.2	34.5	22.1	40.1		34.0
36.0														35.6mx 20.6	30.0	20.3	35.6		36.0
38.0																18.8	30.6		38.0
40.0																38.2mx 18.7	30.0		40.0
No. of Part line	16		16		14		14		12		12		10		10		9		No. of Part line

Note:

- 1.RATED LOADS ARE ACCORDING TO EN13000 , AND FOR FULL SWINGING OF 360°ON A FIRM LEVEL GROUND.
- 2.THE FIGURE ENCLOSED WITHIN BOLD LINES IN THIS TABLE ARE THE VALUES DETERMINED BASED ON THE STRENGTH OF THE BOOM,ETC.
- 3.THE WORKING RADIUS REFERS TO THE HORIZONTAL DISTANCE FROM THE CENTER OF SWINGING TO THE HOOK AXIS.
- 4.FOR THE OPERATION, BE SURE TO RAISE THE A-FRAME.
- 5.THE LENGTH OF THE JIB WHICH CAN BE MOUNTED TO THE BOOM IS AS SHOWN BELOW:

Jib length(m)	Aux. Jib	13	19	25	31	37
Boom length(m)	18~72	45~72	45~72	45~72	45~72	45~72

- 6.THE ACTUAL LIFTING LOAD IS OBTAINED BY SUBTRACTING THE MASS OF ALL LIFTING EQUIPMENT

SUCH AS THE MAIN HOOK,AUX. HOOK,ETC. FROM THE VALUES GIVEN IN THIS TABLE.

250t Hook...3.3t	135t Hook...2.4t	90t Hook...1.6t	35t Hook...1.1t
200t Hook...3.0t	125t Hook...2.4t	60t Hook...1.4t	13.5t Hook...0.6t

- 7.WHEN THE JIB IS MOUNTED, THE RATED LOAD WITH THE MAIN HOOK IS OBTAINED

BY SUBTRACTING THE VALUE AS SHOWN BELOW (INCLUDING THE MASS OF THE AUX. HOOK) FROM THE VALUES GIVEN IN THIS TABLE.

Jib length(m)	Aux. Jib	13	19	25	31	37
Subtraction mass(t)	0.8	3.5	4.0	4.9	6.0	6.7

- 8.THE RATED LOAD OF THE AUX. JIB IS OBTAINED BY SUBTRACTING 0.4t

FROM THE VALUES GIVEN IN THIS TABLE CORRESPONDING TO THE LENGTH OF THE MOUNTED BOOM.

BUT THE MAX. RATED LOAD IS 13.5ton.

THE RATED LOAD WITH THE JIB OF 13.0m TO 37.0m LONG REFERS TO THE JIB RATED LOAD TABLE.

- 9.WHEN THE MAIN HOOK IS MOUNTED THE LOAD WHICH CAN BE LIFTED

WITH THE JIB IS GIVEN BY SUBTRACTING THE TOTAL MASS OF MAIN AND AUX. HOOKS FROM THE VALUE IN THIS TABLE.

- 10.THE RATED LOAD ARE LIMITED ACCORDING TO THE WIRE ROPE PART LINE AS SHOWN BELOW:

1 PART OF LINE ... UP TO 13.5 ton	5 PART OF LINE ... UP TO 67.5ton	9 PART OF LINE ... UP TO 121.5ton	13 PART OF LINE ... UP TO 175.5ton
2 PART OF LINE ... UP TO 27.0ton	6 PART OF LINE ... UP TO 81.0ton	10 PART OF LINE ... UP TO 135.0ton	14 PART OF LINE ... UP TO 189.0ton
3 PART OF LINE ... UP TO 40.5ton	7 PART OF LINE ... UP TO 94.5ton	11 PART OF LINE ... UP TO 148.5ton	15 PART OF LINE ... UP TO 202.5ton
4 PART OF LINE ... UP TO 54.0ton	8 PART OF LINE ... UP TO 108.0ton	12 PART OF LINE ... UP TO 162.0ton	16 PART OF LINE ... UP TO 250.0ton

STANDARD BOOM RATED LIFTING LOADS(92.0t Counterweight + 19.0t Carbody weight)

unit: ton

Boom length(m) Working radius(m)	45.0		48.0		51.0		54.0		57.0		60.0		63.0		66.0		69.0		72.0		Boom length(m) Working radius(m)		
	Load	Angle	Load	Angle	Load	Angle	Load	Angle	Load	Angle	Load	Angle	Load	Angle	Load	Angle	Load	Angle	Load	Angle			
5.0																					5.0		
6.0																						6.0	
7.0																						7.0	
8.0																						8.0	
9.0	9.9mx 108.0	80.0																				9.0	
10.0	105.7	79.8	10.4mx 93.1	80.0	11.7mx 87.5	79.0	11.4mx 81.0	80.0														10.0	
12.0	87.8	77.2	86.3	78.0	86.0	78.8	78.0	79.4	76.9	80.0	12.5mx 75.0	80.0	13.0mx 75.0	80.0	13.5mx 64.0	80.0						12.0	
14.0	73.8	74.6	71.6	75.6	71.3	76.4	70.1	77.2	70.0	77.9	70.0	78.5	69.8	79.1	62.9	79.6	62.9	80.0	14.6mx 55.0	80.0		14.0	
16.0	61.2	71.9	60.9	73.1	60.8	74.1	60.5	75.0	60.3	75.8	58.2	76.6	58.1	77.2	57.9	77.8	57.7	78.3	52.1	78.8		16.0	
18.0	52.0	69.2	51.8	70.6	51.6	71.8	51.3	72.8	51.2	73.7	51.0	74.6	49.3	75.3	49.0	76.0	48.9	76.6	48.4	77.2		18.0	
20.0	45.0	66.5	44.8	68.0	44.6	69.4	44.4	70.6	44.2	71.6	44.1	72.6	43.9	73.4	43.7	74.2	42.2	74.9	42.3	75.6		20.0	
22.0	39.5	63.6	39.3	65.4	39.1	66.9	38.9	68.3	38.7	69.5	38.6	70.6	38.4	71.5	38.2	72.4	38.0	73.2	37.1	73.9		22.0	
24.0	35.2	60.7	34.9	62.7	34.7	64.5	34.5	66.0	34.3	67.3	34.2	68.5	34.0	69.6	33.7	70.6	33.5	71.4	33.4	72.2		24.0	
26.0	31.5	57.8	31.3	60.0	31.1	61.9	30.8	63.6	30.7	65.1	30.5	66.4	30.3	67.6	30.1	68.7	29.9	69.7	29.9	70.6		26.0	
28.0	28.5	54.7	28.3	57.2	28.0	59.3	27.8	61.2	27.6	62.9	27.5	64.3	27.3	65.6	27.1	66.8	26.8	67.9	26.9	68.9		28.0	
30.0	26.1	51.5	25.7	54.3	25.5	56.7	25.3	58.8	25.0	60.6	24.9	62.2	24.7	63.6	24.4	64.9	24.2	66.1	24.6	67.1		30.0	
32.0	23.9	48.1	23.7	51.3	23.3	53.9	23.0	56.2	22.8	58.2	22.7	60.0	22.5	61.6	22.2	63.0	22.0	64.2	22.4	65.4		32.0	
34.0	22.0	44.5	21.7	48.1	21.5	51.1	21.1	53.6	20.8	55.8	20.7	57.8	20.6	59.5	20.3	61.0	20.0	62.4	20.5	63.6		34.0	
36.0	20.2	40.7	20.0	44.8	19.8	48.1	19.6	50.9	19.2	53.3	19.0	55.5	18.8	57.3	18.6	59.0	18.4	60.5	18.8	61.8		36.0	
38.0	18.7	36.6	18.5	41.2	18.3	45.0	18.1	48.1	18.0	50.8	17.5	53.1	17.4	55.1	17.1	56.9	16.8	58.5	17.3	60.0		38.0	
40.0	17.4	32.0	17.2	37.4	17.1	41.7	16.7	45.2	16.6	48.1	16.4	50.6	16.0	52.9	15.8	54.8	15.5	56.6	16.0	58.1		40.0	
42.0	40.8mx 16.9	30.0	16.0	33.2	15.8	38.1	15.6	42.1	15.4	45.3	15.2	48.1	15.1	50.5	14.5	52.7	14.3	54.5	14.7	56.2		42.0	
44.0			43.4mx 15.2	30.0	14.7	34.3	14.5	38.8	14.3	42.4	14.1	45.5	14.0	48.1	13.7	50.4	13.2	52.5	13.6	54.3		44.0	
46.0					13.8	30.0	13.5	35.2	13.3	39.3	13.1	42.7	13.0	45.6	12.7	48.1	12.4	50.3	12.6	52.3		46.0	
48.0									12.7	31.3	12.4	36.0	12.2	39.8	12.1	43.0	11.8	45.7	11.5	48.1	11.7	50.2	48.0
50.0								48.6mx 12.4	30.0	11.6	32.3	11.4	36.7	11.2	40.2	11.0	43.2	10.7	45.8	10.9	48.1	50.0	
52.0									51.2mx 11.1	30.0	10.7	33.3	10.5	37.3	10.3	40.6	9.9	43.5	10.2	45.9		52.0	
54.0											53.8mx 9.9	30.0	9.8	34.1	9.5	37.8	9.2	41.0	9.5	43.7		54.0	
56.0													9.1	30.7	8.8	34.9	8.5	38.3	8.7	41.3		56.0	
58.0													56.4mx 9.0	30.0	8.2	31.7	7.9	35.6	7.8	38.8		58.0	
60.0															59.0mx 7.9	30.0	7.3	32.6	7.1	36.2		60.0	
62.0																	61.6mx 6.8	30.0	6.5	33.3		62.0	
64.0																			6.0	30.3		64.0	
66.0																			64.2mx 6.0	30.0		66.0	
No. of Part line	8		7		7		6		6		6		6		5		5		5		No. of Part line		

AUX. JIB RATED LIFTING LOADS

WITH STANDARD BOOM(92.0t Counterweight + 19.0t Carbody weight)

unit:ton

Boom length(m) Working radius(m)	18.0	21.0	24.0	27.0	30.0	33.0	36.0	39.0	42.0	45.0	48.0	51.0	54.0	57.0	60.0	63.0	66.0	69.0	72.0	Boom length(m) Working radius(m)	
5.0																					5.0
6.0	6.0mx 13.5	6.5mx 13.5																			6.0
7.0	13.5	13.5	7.1mx 13.5	7.6mx 13.5																	7.0
8.0	13.5	13.5	13.5	13.5	8.1mx 13.5	8.6mx 13.5															8.0
9.0	13.5	13.5	13.5	13.5	13.5	13.5	9.1mx 13.5	9.7mx 13.5													9.0
10.0	13.5	13.5	13.5	13.5	13.5	13.5	13.5	13.5	10.2mx 13.5	10.7mx 13.5	11.2mx 13.5	11.7mx 13.5									10.0
12.0	13.5	13.5	13.5	13.5	13.5	13.5	13.5	13.5	13.5	13.5	13.5	13.5	12.3mx 13.5	12.8mx 13.5	13.3mx 13.5	13.8mx 13.5					12.0
14.0	13.5	13.5	13.5	13.5	13.5	13.5	13.5	13.5	13.5	13.5	13.5	13.5	13.5	13.5	13.5	13.5	14.3mx 13.5	14.9mx 13.5	15.4mx 13.5		14.0
16.0	13.5	13.5	13.5	13.5	13.5	13.5	13.5	13.5	13.5	13.5	13.5	13.5	13.5	13.5	13.5	13.5	13.5	13.5	13.5	13.5	16.0
18.0	13.5	13.5	13.5	13.5	13.5	13.5	13.5	13.5	13.5	13.5	13.5	13.5	13.5	13.5	13.5	13.5	13.5	13.5	13.5	13.5	18.0
20.0	19.0mx 13.5	13.5	13.5	13.5	13.5	13.5	13.5	13.5	13.5	13.5	13.5	13.5	13.5	13.5	13.5	13.5	13.5	13.5	13.5	13.5	20.0
22.0		21.5mx 13.5	13.5	13.5	13.5	13.5	13.5	13.5	13.5	13.5	13.5	13.5	13.5	13.5	13.5	13.5	13.5	13.5	13.5	13.5	22.0
24.0			13.5	13.5	13.5	13.5	13.5	13.5	13.5	13.5	13.5	13.5	13.5	13.5	13.5	13.5	13.5	13.5	13.5	13.5	24.0
26.0			24.1mx 13.5	13.5	13.5	13.5	13.5	13.5	13.5	13.5	13.5	13.5	13.5	13.5	13.5	13.5	13.5	13.5	13.5	13.5	26.0
28.0				26.7mx 13.5	13.5	13.5	13.5	13.5	13.5	13.5	13.5	13.5	13.5	13.5	13.5	13.5	13.5	13.5	13.5	13.5	28.0
30.0					29.3mx 13.5	13.5	13.5	13.5	13.5	13.5	13.5	13.5	13.5	13.5	13.5	13.5	13.5	13.5	13.5	13.5	30.0
32.0						31.9mx 13.5	13.5	13.5	13.5	13.5	13.5	13.5	13.5	13.5	13.5	13.5	13.5	13.5	13.5	13.5	32.0
34.0							13.5	13.5	13.5	13.5	13.5	13.5	13.5	13.5	13.5	13.5	13.5	13.5	13.5	13.5	34.0
36.0							34.5mx 13.5	13.5	13.5	13.5	13.5	13.5	13.5	13.5	13.5	13.5	13.5	13.5	13.5	13.5	36.0
38.0								37.1mx 13.5	13.5	13.5	13.5	13.5	13.5	13.5	13.5	13.5	13.5	13.5	13.5	13.5	38.0
40.0									39.7mx 13.5	13.5	13.5	13.5	13.5	13.5	13.5	13.5	13.5	13.5	13.5	13.5	40.0
42.0										13.5	13.5	13.5	13.5	13.5	13.5	13.5	13.5	13.5	13.5	13.5	42.0
44.0										42.3mx 13.5	13.5	13.5	13.5	13.5	13.5	13.5	13.3	12.8	13.2		44.0
46.0											44.9mx 13.5	13.4	13.1	12.9	12.7	12.6	12.3	12.0	12.2		46.0
48.0												47.5mx 12.7	12.3	12.0	11.8	11.7	11.4	11.1	11.3		48.0
50.0													11.3	11.2	11.0	10.8	10.6	10.3	10.5		50.0
52.0													50.1mx 11.3	10.3	10.3	10.1	9.9	9.5	9.8		52.0
54.0														52.7mx 10.1	9.5	9.4	9.1	8.7	9.1		54.0
56.0															55.3mx 9.0	8.7	8.4	8.1	8.3		56.0
58.0																57.9mx 8.1	7.8	7.4	7.4		58.0
60.0																	7.2	6.8	6.7		60.0
62.0																	60.5mx 7.1	6.2	6.1		62.0
64.0																		63.1mx 5.9	5.6		64.0
66.0																			65.7mx 5.0		66.0
No. of Part line	1	1	1	1	1	1	1	1	1	1	1	1	1	1	1	1	1	1	1	1	No. of Part line

Note:

- 1.RATED LOADS ARE ACCORDING TO EN13000 , AND FOR FULL SWINGING OF 360°ON A FIRM LEVEL GROUND.
- 2.THE WORKING RADIUS REFERS TO THE HORIZONTAL DISTANCE FROM THE CENTER OF SWINGING TO THE HOOK AXIS.
- 3.THE ACTUAL LIFTING LOAD IS OBTAINED BY SUBTRACTING THE MASS OF ALL LIFTING EQUIPMENT SUCH AS THE MAIN HOOK,AUX. HOOK,ETC. FROM THE VALUES GIVEN IN THIS TABLE.

250t Hook...3.3t 135t Hook...2.4t 90t Hook...1.6t 35t Hook...1.1t
 200t Hook...3.0t 125t Hook...2.4t 60t Hook...1.4t 13.5t Hook...0.6t

LIGHT BOOM RATED LIFTING LOADS(92.0t Counterweight + 19.0t Carbody weight)

unit:ton

Boom length(m) Working radius(m)	72.0		75.0		78.0		81.0		84.0		87.0		90.0		93.0		Boom length(m) Working radius(m)
	Load	Angle	Load	Angle	Load	Angle	Load	Angle	Load	Angle	Load	Angle	Load	Angle	Load	Angle	
14.0	14.4m×37.5	80.0	14.9m×35.0	80.0	15.4m×33.5	80.0	16.0m×31.5	80.0									14.0
16.0	37.5	78.7	35.0	79.2	33.5	79.6	31.5	79.6	16.5m×27.0	80.0	17.0m×25.0	80.0	17.5m×22.6	80.0	18.0m×21.0	80.0	16.0
18.0	36.1	77.1	34.0	77.6	31.8	78.1	30.3	78.5	27.0	78.2	25.0	78.3	22.6	79.0	18.2m×21.0	79.9	18.0
20.0	34.2	75.4	32.6	76.0	30.3	76.6	29.3	77.1	27.0	77.6	25.0	77.9	22.6	78.3	20.2	78.7	20.0
22.0	32.5	73.8	31.2	74.4	29.0	75.1	27.9	75.6	26.6	76.1	24.2	76.6	21.5	77.0	19.4	77.5	22.0
24.0	31.0	72.1	29.8	72.9	27.7	73.5	26.7	74.2	25.6	74.7	23.0	75.2	20.4	75.7	18.3	76.2	24.0
26.0	29.4	70.4	28.3	71.2	26.6	72.0	25.6	72.7	24.5	73.3	21.9	73.8	19.4	74.4	17.4	74.9	26.0
28.0	27.2	68.7	26.5	69.6	25.4	70.4	24.5	71.2	23.5	71.9	20.8	72.5	18.5	73.1	16.5	73.6	28.0
30.0	24.6	67.0	24.4	68.0	24.1	68.9	23.5	69.7	22.5	70.4	19.7	71.1	17.6	71.7	15.8	72.3	30.0
32.0	22.6	65.3	22.5	66.3	22.4	67.3	22.2	68.2	21.1	69.0	18.7	69.6	16.8	70.4	15.0	71.0	32.0
34.0	21.0	63.5	20.8	64.6	20.6	65.7	20.4	66.6	19.8	67.5	17.8	68.2	15.9	69.0	14.3	69.7	34.0
36.0	19.5	61.7	19.2	62.9	19.1	64.1	18.9	65.1	18.6	66.0	16.9	66.8	15.1	67.6	13.6	68.4	36.0
38.0	18.0	59.9	17.8	61.2	17.7	62.4	17.6	63.5	17.5	64.5	15.9	65.3	14.3	66.2	13.0	67.0	38.0
40.0	16.7	58.0	16.5	59.4	16.4	60.7	16.3	61.9	16.4	63.0	15.0	63.9	13.5	64.8	12.3	65.7	40.0
42.0	15.5	56.1	15.4	57.6	15.3	59.0	15.2	60.3	15.1	61.5	14.1	62.4	12.8	63.4	11.7	64.3	42.0
44.0	14.4	54.2	14.3	55.8	14.2	57.3	14.1	58.6	14.0	59.9	13.2	60.9	12.1	61.9	11.2	62.9	44.0
46.0	13.4	52.2	13.3	53.9	13.2	55.5	13.1	57.0	13.0	58.3	12.4	59.4	11.5	60.5	10.7	61.5	46.0
48.0	12.7	50.1	12.6	52.0	12.4	53.7	12.3	55.3	12.2	56.7	11.8	57.8	10.9	59.0	10.3	60.1	48.0
50.0	11.9	48.0	11.8	50.0	11.6	51.9	11.5	53.5	11.5	55.0	11.1	56.2	10.4	57.5	9.9	58.7	50.0
52.0	11.2	45.8	11.1	48.0	11.0	50.0	10.9	51.7	10.8	53.3	10.4	54.6	9.9	56.0	9.4	57.2	52.0
54.0	10.4	43.5	10.4	45.9	10.3	48.0	10.2	49.9	10.1	51.6	9.8	53.0	9.3	54.4	9.0	55.7	54.0
56.0	9.8	41.2	9.7	43.7	9.6	46.0	9.5	48.0	9.4	49.8	9.2	51.3	8.7	52.8	8.3	54.2	56.0
58.0	9.1	38.7	9.1	41.5	8.9	43.9	8.8	46.1	8.8	48.0	8.5	49.6	8.2	51.2	7.7	52.7	58.0
60.0	8.5	36.0	8.5	39.1	8.4	41.7	8.2	44.1	8.2	46.2	7.9	47.8	7.6	49.5	7.2	51.1	60.0
62.0	7.9	33.2	7.9	36.6	7.8	39.5	7.8	42.0	7.6	44.2	7.4	46.0	7.0	47.8	6.6	49.5	62.0
64.0	7.4	30.2	7.3	33.9	7.3	37.1	7.3	39.8	7.1	42.2	7.0	44.1	6.5	46.0	6.1	47.8	64.0
66.0	64.1m×7.3	30.0	6.8	31.1	6.8	34.6	6.8	37.6	6.6	40.1	6.5	42.1	6.1	44.2	5.6	46.1	66.0
68.0			66.7m×6.7	30.0	6.3	31.9	6.4	35.2	6.1	38.0	6.0	40.1	5.7	42.4	5.1	44.4	68.0
70.0					69.3m×6.0	30.0	5.9	32.6	5.6	35.7	5.6	38.0	5.3	40.4	4.6	42.6	70.0
72.0							71.9m×5.5	30.0	5.2	33.3	5.2	35.8	4.8	38.4	4.1	40.7	72.0
74.0									4.8	30.7	4.7	33.5	4.4	36.3	3.6	38.7	74.0
76.0									74.5m×4.6	30.0	4.3	31.0	4.0	34.1	3.1	36.7	76.0
78.0											76.7m×3.7	30.0	3.6	31.7	2.7	34.6	78.0
80.0													79.3m×2.4	30.0	2.3	32.3	80.0
No. of Part line	3		3		3		3		3		2		2		2		No. of Part line

Note:

- 1.RATED LOADS ARE ACCORDING TO EN13000 , AND FOR FULL SWINGING OF 360°ON A FIRM LEVEL GROUND.
- 2.THE FIGURE ENCLOSED WITHIN BOLD LINES IN THIS TABLE ARE THE VALUES DETERMINED BASED ON THE STRENGTH OF THE BOOM,ETC.
- 3.THE WORKING RADIUS REFERS TO THE HORIZONTAL DISTANCE FROM THE CENTER OF SWINGING TO THE HOOK AXIS.
- 4.FOR THE OPERATION, BE SURE TO RAISE THE A-FRAME.
- 5.THE LENGTH OF THE BOOM WHICH CAN BE MOUNTED WITH THE AUX. JIB IS 72.0m~90.0m.
- 6.THE ACTUAL LIFTING LOAD IS OBTAINED BY SUBTRACTING THE MASS OF ALL LIFTING EQUIPMENT SUCH AS THE MAIN HOOK,AUX. HOOK,ETC. FROM THE VALUES GIVEN IN THIS TABLE.
60t Hook...1.4t 35t Hook...1.1t 13.5t Hook...0.6t
- 7.WHEN THE AUX.JIB IS MOUNTED, RATED LOAD WITH THE MAIN HOOK IS OBTAINED BY SUBTRACTING 0.8ton (INCLUDING THE MASS OF THE AUX. HOOK) FROM THE VALUES GIVEN IN THIS TABLE.
- 8.THE RATED LOAD OF THE AUX. JIB IS OBTAINED BY SUBTRACTING 0.4t FROM THE VALUES GIVEN IN THIS TABLE CORRESPONDING TO THE LENGTH OF THE MOUNTED BOOM.
BUT THE MAX. RATED LOAD IS 13.5ton.
- 9.WHEN THE MAIN HOOK IS MOUNTED THE LOAD WHICH CAN BE LIFTED WITH THE JIB IS GIVEN BY SUBTRACTING THE TOTAL MASS OF MAIN AND AUX. HOOKS FROM THE VALUE IN THIS TABLE.
- 10.THE RATED LOAD ARE LIMITED ACCORDING TO THE WIRE ROPE PART LINE AS SHOWN BELOW:
1 PART OF LINE ... UP TO 13.5 ton 2 PART OF LINE ... UP TO 25.0ton 3 PART OF LINE ... UP TO 37.5ton

AUX. JIB RATED LIFTING LOADS

WITH LIGHT BOOM(92.0t Counterweight + 19.0t Carbody weight)

unit : ton

Working radius(m)	Boom length(m)							Working radius(m)
	72.0	75.0	78.0	81.0	84.0	87.0	90.0	
14.0	15.2m× 13.5	15.7m× 13.5						14.0
16.0	13.5	13.5	16.3m× 13.5	16.8m× 13.5	17.3m× 13.5	17.8m× 13.5		16.0
18.0	13.5	13.5	13.5	13.5	13.5	13.5	18.3m× 13.5	18.0
20.0	13.5	13.5	13.5	13.5	13.5	13.5	13.5	20.0
22.0	13.5	13.5	13.5	13.5	13.5	13.5	13.5	22.0
24.0	13.5	13.5	13.5	13.5	13.5	13.5	13.5	24.0
26.0	13.5	13.5	13.5	13.5	13.5	13.5	13.5	26.0
28.0	13.5	13.5	13.5	13.5	13.5	13.5	13.5	28.0
30.0	13.5	13.5	13.5	13.5	13.5	13.5	13.5	30.0
32.0	13.5	13.5	13.5	13.5	13.5	13.5	13.5	32.0
34.0	13.5	13.5	13.5	13.5	13.5	13.5	13.5	34.0
36.0	13.5	13.5	13.5	13.5	13.5	13.5	13.5	36.0
38.0	13.5	13.5	13.5	13.5	13.5	13.5	13.5	38.0
40.0	13.5	13.5	13.5	13.5	13.5	13.5	13.1	40.0
42.0	13.5	13.5	13.5	13.5	13.5	13.5	12.4	42.0
44.0	13.5	13.5	13.5	13.5	13.5	12.8	11.7	44.0
46.0	13.0	12.9	12.8	12.7	12.6	12.0	11.1	46.0
48.0	12.3	12.2	12.0	11.9	11.8	11.4	10.5	48.0
50.0	11.5	11.4	11.2	11.1	11.1	10.7	10.0	50.0
52.0	10.8	10.7	10.6	10.5	10.4	10.0	9.5	52.0
54.0	10.0	10.0	9.9	9.8	9.7	9.4	8.9	54.0
56.0	9.4	9.3	9.2	9.1	9.0	8.8	8.3	56.0
58.0	8.7	8.7	8.5	8.4	8.4	8.1	7.8	58.0
60.0	8.1	8.1	8.0	7.8	7.8	7.5	7.2	60.0
62.0	7.5	7.5	7.4	7.4	7.2	7.0	6.6	62.0
64.0	7.0	6.9	6.9	6.9	6.7	6.6	6.1	64.0
66.0	65.6m× 6.7	6.4	6.4	6.4	6.2	6.1	5.7	66.0
68.0		6.3	5.9	6.0	5.7	5.6	5.3	68.0
70.0		68.2m× 6.0	5.6	5.5	5.2	5.2	4.9	70.0
72.0			70.8m× 5.3	5.1	4.8	4.8	4.4	72.0
74.0				73.4m× 4.8	4.4	4.3	4.0	74.0
76.0					3.9	3.9	3.6	76.0
78.0						3.7	3.2	78.0
80.0						78.6m× 3.4	2.9	80.0
No. of Part line	1	1	1	1	1	1	1	No. of Part line

Note:

1.RATED LOADS ARE ACCORDING TO EN13000 , AND FOR FULL SWINGING OF 360° ON

A FIRM LEVEL GROUND.

2.THE WORKING RADIUS REFERS TO THE HORIZONTAL DISTANCE FROM

THE CENTER OF SWINGING TO THE HOOK AXIS.

3.THE ACTUAL LIFTING LOAD IS OBTAINED BY SUBTRACTING THE MASS OF

ALL LIFTING EQUIPMENT SUCH AS THE MAIN HOOK,AUX. HOOK,ETC. FROM

THE VALUES GIVEN IN THIS TABLE.

60t Hook...1.4t

35t Hook...1.1t

13.5t Hook...0.6t

CRANE JIB RATED LIFTING LOADS

WITH STANDARD BOOM(92.0t Counterweight + 19.0t Carbody weight)

unit: ton

Boom length(m)	45.0										Boom length(m)
Jib length(m)	13.0		19.0		25.0		31.0		37.0		Jib length(m)
Jib offset angle	10°	30°	10°	30°	10°	30°	10°	30°	10°	30°	Jib offset angle
Working radius (m)											Working radius (m)
14.0	27.0										14.0
16.0	27.0		16.5m× 25.0								16.0
18.0	27.0	21.7	25.0		18.5m× 13.5						18.0
20.0	27.0	20.6	24.2		13.5		20.5m× 8.3				20.0
22.0	27.0	19.7	23.5	22.5m× 13.5	13.1		8.1		22.5m× 5.2		22.0
24.0	27.0	18.8	22.9	13.5	12.7		7.7		5.0		24.0
26.0	27.0	18.1	21.6	13.5	12.3	9.5	7.5		4.8		26.0
28.0	27.0	17.4	20.3	13.2	11.9	9.3	7.2		4.6		28.0
30.0	27.0	16.7	19.1	12.7	11.6	9.1	6.9	5.3	4.4		30.0
32.0	24.9	16.2	18.0	12.3	11.3	8.9	6.7	5.1	4.2		32.0
34.0	22.9	15.6	17.1	11.8	11.0	8.7	6.5	5.0	4.0	2.9	34.0
36.0	21.0	15.2	16.2	11.4	10.7	8.6	6.2	4.9	3.8	2.8	36.0
38.0	19.4	14.7	15.5	11.1	10.4	8.4	6.1	4.7	3.7	2.8	38.0
40.0	18.0	14.4	14.8	10.7	10.1	8.2	5.9	4.6	3.5	2.7	40.0
42.0	16.7	14.0	14.1	10.4	9.9	8.1	5.7	4.5	3.4	2.6	42.0
44.0	15.6	13.7	13.6	10.2	9.7	8.0	5.5	4.4	3.3	2.5	44.0
46.0	14.5	13.4	13.0	9.9	9.5	7.8	5.4	4.3	3.2	2.4	46.0
48.0	13.6	13.2	12.5	9.7	9.3	7.6	5.2	4.2	3.0	2.4	48.0
50.0	12.7	12.9	12.1	9.5	9.1	7.4	5.1	4.1	2.9	2.3	50.0
52.0	11.9	12.0	11.7	9.3	8.9	7.2	4.9	4.1	2.8	2.2	52.0
54.0	53.0m× 11.5	53.5m× 11.4	11.3	9.2	8.8	7.1	4.8	4.0	2.7	2.2	54.0
56.0			10.9	9.0	8.6	6.9	4.7	3.9	2.7	2.1	56.0
58.0			10.3	8.9	8.5	6.8	4.6	3.9	2.6	2.1	58.0
60.0			58.5m× 10.1	8.9	8.3	6.7	4.5	3.8	2.5	2.0	60.0
62.0					8.0	6.6	4.4	3.8	2.4	2.0	62.0
64.0					7.8	6.5	4.3	3.7	2.3	1.9	64.0
66.0					64.5m× 7.8	6.5	4.2	3.7	2.3	1.9	66.0
68.0							4.2	3.7	2.2	1.8	68.0
70.0							4.1	3.7	2.1	1.8	70.0
72.0								3.7	2.1	1.8	72.0
74.0									2.0	1.8	74.0
76.0									75.0m× 2.0	1.8	76.0
78.0										1.8	78.0
80.0											80.0
82.0											82.0
84.0											84.0
86.0											86.0
88.0											88.0
90.0											90.0
92.0											92.0
94.0											94.0
96.0											96.0
No. of Part line	2	2	2	1	1	1	1	1	1	1	No. of Part line

Note:

1.RATED LOADS ARE ACCORDING TO EN13000 , AND FOR FULL SWINGING OF 360° ON A FIRM LEVEL GROUND.

2.THE WORKING RADIUS REFERS TO THE HORIZONTAL DISTANCE FROM THE CENTER OF SWINGING TO THE HOOK AXIS.

3.THE ACTUAL LIFTING LOAD IS OBTAINED BY SUBTRACTING THE MASS OF ALL LIFTING EQUIPMENT SUCH AS THE MAIN MAIN HOOK,AUX. HOOK,ETC. FROM THE VALUES GIVEN IN THIS TABLE.

250t Hook...3.3t

135t Hook...2.4t

90t Hook...1.6t

35t Hook...1.1t

200t Hook...3.0t

125t Hook...2.4t

60t Hook...1.4t

13.5t Hook...0.6t

CRANE JIB RATED LIFTING LOADS

WITH STANDARD BOOM(92.0t Counterweight + 19.0t Carbody weight)

unit: ton

Boom length(m)	48.0										Boom length(m)
Jib length(m)	13.0		19.0		25.0		31.0		37.0		Jib length(m)
Jib offset angle	10°	30°	10°	30°	10°	30°	10°	30°	10°	30°	Jib offset angle
Working radius (m)											Working radius (m)
14.0											14.0
16.0	15.0m× 27.0		17.0m× 25.0								16.0
18.0	27.0	18.5m× 21.7	25.0		19.0m× 13.5						18.0
20.0	27.0	20.9	24.5		13.5		21.0m× 8.3				20.0
22.0	27.0	20.0	23.8	23.0m× 13.5	13.3		8.2		23.0m× 5.2		22.0
24.0	27.0	19.2	23.2	13.5	12.8		7.8		5.1		24.0
26.0	27.0	18.4	22.3	13.5	12.5	26.5m× 9.5	7.6		4.8		26.0
28.0	27.0	17.7	21.0	13.4	12.1	9.4	7.3		4.6		28.0
30.0	27.0	17.1	19.7	12.9	11.7	9.2	7.0	30.5m× 5.3	4.4		30.0
32.0	24.7	16.5	18.7	12.5	11.4	9.0	6.8	5.2	4.3		32.0
34.0	22.6	16.0	17.7	12.0	11.1	8.8	6.6	5.0	4.1	34.5m× 2.9	34.0
36.0	20.8	15.5	16.8	11.7	10.8	8.6	6.4	4.9	3.9	2.9	36.0
38.0	19.2	15.1	16.0	11.3	10.6	8.5	6.2	4.8	3.8	2.8	38.0
40.0	17.7	14.7	15.3	11.0	10.3	8.3	6.0	4.7	3.6	2.7	40.0
42.0	16.4	14.3	14.7	10.7	10.1	8.2	5.8	4.6	3.5	2.6	42.0
44.0	15.3	14.0	14.1	10.4	9.9	8.1	5.6	4.5	3.4	2.5	44.0
46.0	14.2	13.7	13.5	10.1	9.6	8.0	5.5	4.4	3.2	2.5	46.0
48.0	13.3	13.4	13.0	9.9	9.4	7.8	5.3	4.3	3.1	2.4	48.0
50.0	12.4	12.6	12.5	9.7	9.3	7.6	5.2	4.2	3.0	2.3	50.0
52.0	11.6	11.8	12.1	9.5	9.1	7.4	5.1	4.1	2.9	2.3	52.0
54.0	10.8	11.0	11.3	9.3	8.9	7.2	4.9	4.1	2.8	2.2	54.0
56.0	55.5m× 10.3	10.3	10.6	9.2	8.8	7.1	4.8	4.0	2.7	2.1	56.0
58.0		56.5m× 10.1	10.0	9.0	8.6	6.9	4.7	3.9	2.6	2.1	58.0
60.0			9.4	9.0	8.5	6.8	4.6	3.9	2.6	2.0	60.0
62.0			61.0m× 9.1	8.9	8.3	6.7	4.5	3.8	2.5	2.0	62.0
64.0				62.5m× 8.8	8.1	6.6	4.4	3.8	2.4	2.0	64.0
66.0					7.9	6.5	4.3	3.8	2.3	1.9	66.0
68.0					67.0m× 7.8	6.5	4.2	3.7	2.3	1.9	68.0
70.0						68.5m× 6.5	4.2	3.7	2.2	1.8	70.0
72.0							4.1	3.7	2.1	1.8	72.0
74.0							72.5m× 4.1	3.7	2.1	1.8	74.0
76.0								74.5m× 3.7	2.0	1.8	76.0
78.0									77.5m× 2.0	1.8	78.0
80.0										1.8	80.0
82.0										80.5m× 1.8	82.0
84.0											84.0
86.0											86.0
88.0											88.0
90.0											90.0
92.0											92.0
94.0											94.0
96.0											96.0
No. of Part line	2	2	2	1	1	1	1	1	1	1	No. of Part line

Note:

- 1.RATED LOADS ARE ACCORDING TO EN13000 , AND FOR FULL SWINGING OF 360° ON A FIRM LEVEL GROUND.
 - 2.THE WORKING RADIUS REFERS TO THE HORIZONTAL DISTANCE FROM THE CENTER OF SWINGING TO THE HOOK AXIS.
 - 3.THE ACTUAL LIFTING LOAD IS OBTAINED BY SUBTRACTING THE MASS OF ALL LIFTING EQUIPMENT SUCH AS THE MAIN MAIN HOOK,AUX. HOOK,ETC. FROM THE VALUES GIVEN IN THIS TABLE.
- 250t Hook...3.3t 135t Hook...2.4t 90t Hook...1.6t 35t Hook...1.1t
 200t Hook...3.0t 125t Hook...2.4t 60t Hook...1.4t 13.5t Hook...0.6t

CRANE JIB RATED LIFTING LOADS

WITH STANDARD BOOM(92.0t Counterweight + 19.0t Carbody weight)

unit: ton

Boom length(m)	51.0										Boom length(m)
Jib length(m)	13.0		19.0		25.0		31.0		37.0		Jib length(m)
Jib offset angle	10°	30°	10°	30°	10°	30°	10°	30°	10°	30°	Jib offset angle
Working radius (m)											Working radius (m)
14.0	15.5m× 27.0										14.0
16.0	27.0		17.5m× 25.0								16.0
18.0	27.0	19.0m× 21.7	25.0		19.5m× 13.5						18.0
20.0	27.0	21.2	24.7		13.5		21.5m× 8.3				20.0
22.0	27.0	20.3	24.0	23.5m× 13.5	13.4		8.2		23.5m× 5.2		22.0
24.0	27.0	19.5	23.4	13.5	13.0		7.9		5.1		24.0
26.0	27.0	18.7	22.8	13.5	12.6	27.0m× 9.5	7.6		4.9		26.0
28.0	27.0	18.0	21.6	13.5	12.2	9.4	7.4		4.7		28.0
30.0	26.8	17.4	20.4	13.1	11.9	9.2	7.1	31.0m× 5.3	4.5		30.0
32.0	24.5	16.8	19.3	12.7	11.6	9.0	6.9	5.2	4.3		32.0
34.0	22.4	16.3	18.3	12.3	11.3	8.9	6.7	5.1	4.2	35.0m× 3.0	34.0
36.0	20.6	15.8	17.4	11.9	11.0	8.7	6.5	4.9	4.0	2.9	36.0
38.0	18.9	15.4	16.6	11.5	10.7	8.5	6.3	4.8	3.8	2.8	38.0
40.0	17.5	15.0	15.9	11.2	10.5	8.4	6.1	4.7	3.7	2.7	40.0
42.0	16.2	14.6	15.2	10.9	10.2	8.3	5.9	4.6	3.6	2.6	42.0
44.0	15.1	14.3	14.6	10.6	10.0	8.1	5.7	4.5	3.4	2.6	44.0
46.0	14.0	14.0	14.0	10.3	9.8	8.0	5.6	4.4	3.3	2.5	46.0
48.0	13.1	13.4	13.5	10.1	9.6	7.9	5.4	4.3	3.2	2.4	48.0
50.0	12.2	12.5	12.7	9.9	9.4	7.7	5.3	4.3	3.1	2.4	50.0
52.0	11.4	11.6	11.9	9.7	9.2	7.5	5.2	4.2	3.0	2.3	52.0
54.0	10.6	10.8	11.1	9.5	9.1	7.4	5.0	4.1	2.9	2.2	54.0
56.0	9.9	10.1	10.4	9.3	8.9	7.2	4.9	4.0	2.8	2.2	56.0
58.0	9.3	9.4	9.8	9.2	8.8	7.1	4.8	4.0	2.7	2.1	58.0
60.0		59.0m× 9.1	9.2	9.1	8.6	6.9	4.7	3.9	2.6	2.1	60.0
62.0			8.6	8.8	8.5	6.8	4.6	3.9	2.6	2.0	62.0
64.0			8.0	8.2	8.4	6.7	4.5	3.8	2.5	2.0	64.0
66.0				65.0m× 7.9	7.9	6.6	4.4	3.8	2.4	1.9	66.0
68.0					7.4	6.5	4.3	3.8	2.3	1.9	68.0
70.0					69.5m× 7.0	6.5	4.3	3.7	2.3	1.9	70.0
72.0						71.0m× 6.5	4.2	3.7	2.2	1.8	72.0
74.0							4.1	3.7	2.2	1.8	74.0
76.0							75.0m× 4.1	3.7	2.1	1.8	76.0
78.0								77.0m× 3.7	2.1	1.8	78.0
80.0									2.0	1.8	80.0
82.0										1.8	82.0
84.0										83.0m× 1.8	84.0
86.0											86.0
88.0											88.0
90.0											90.0
92.0											92.0
94.0											94.0
96.0											96.0
No. of Part line	2	2	2	1	1	1	1	1	1	1	No. of Part line

Note:

- 1.RATED LOADS ARE ACCORDING TO EN13000 , AND FOR FULL SWINGING OF 360° ON A FIRM LEVEL GROUND.
 - 2.THE WORKING RADIUS REFERS TO THE HORIZONTAL DISTANCE FROM THE CENTER OF SWINGING TO THE HOOK AXIS.
 - 3.THE ACTUAL LIFTING LOAD IS OBTAINED BY SUBTRACTING THE MASS OF ALL LIFTING EQUIPMENT SUCH AS THE MAIN MAIN HOOK,AUX. HOOK,ETC. FROM THE VALUES GIVEN IN THIS TABLE.
- 250t Hook...3.3t 135t Hook...2.4t 90t Hook...1.6t 35t Hook...1.1t
 200t Hook...3.0t 125t Hook...2.4t 60t Hook...1.4t 13.5t Hook...0.6t

CRANE JIB RATED LIFTING LOADS

WITH STANDARD BOOM(92.0t Counterweight + 19.0t Carbody weight)

unit: ton

Boom length(m)	54.0										Boom length(m)
Jib length(m)	13.0		19.0		25.0		31.0		37.0		Jib length(m)
Jib offset angle	10°	30°	10°	30°	10°	30°	10°	30°	10°	30°	Jib offset angle
Working radius (m)											Working radius (m)
14.0											14.0
16.0	27.0										16.0
18.0	27.0	19.5m× 21.8	25.0								18.0
20.0	27.0	21.5	24.9		13.5						20.0
22.0	27.0	20.6	24.2		13.5		8.3				22.0
24.0	27.0	19.8	23.6	13.5	13.1		8.0		24.5m× 5.1		24.0
26.0	27.0	19.0	23.1	13.5	12.7	27.5m× 9.5	7.7		5.0		26.0
28.0	27.0	18.4	22.2	13.5	12.4	9.5	7.5		4.8		28.0
30.0	26.6	17.7	21.0	13.3	12.0	9.3	7.2	31.5m× 5.3	4.6		30.0
32.0	24.2	17.2	19.9	12.9	11.7	9.1	7.0	5.2	4.4		32.0
34.0	22.2	16.6	18.9	12.5	11.4	8.9	6.8	5.1	4.2	35.5m× 3.0	34.0
36.0	20.3	16.1	17.9	12.1	11.2	8.8	6.6	5.0	4.1	2.9	36.0
38.0	18.7	15.7	17.1	11.7	10.9	8.6	6.4	4.9	3.9	2.8	38.0
40.0	17.3	15.3	16.4	11.4	10.6	8.5	6.2	4.8	3.8	2.8	40.0
42.0	16.0	14.9	15.7	11.1	10.4	8.3	6.0	4.7	3.6	2.7	42.0
44.0	14.8	14.6	15.1	10.8	10.2	8.2	5.9	4.6	3.5	2.6	44.0
46.0	13.8	14.2	14.3	10.5	10.0	8.1	5.7	4.5	3.4	2.5	46.0
48.0	12.8	13.2	13.3	10.3	9.8	8.0	5.5	4.4	3.3	2.5	48.0
50.0	11.9	12.3	12.5	10.1	9.6	7.9	5.4	4.3	3.2	2.4	50.0
52.0	11.1	11.4	11.6	9.8	9.4	7.7	5.3	4.2	3.1	2.3	52.0
54.0	10.4	10.6	10.9	9.7	9.2	7.5	5.1	4.2	3.0	2.3	54.0
56.0	9.7	9.9	10.2	9.5	9.1	7.3	5.0	4.1	2.9	2.2	56.0
58.0	9.0	9.2	9.5	9.3	8.9	7.2	4.9	4.0	2.8	2.2	58.0
60.0	8.4	8.5	8.9	9.2	8.8	7.1	4.8	4.0	2.7	2.1	60.0
62.0	61.0m× 8.1	7.9	8.3	8.6	8.7	6.9	4.7	3.9	2.6	2.1	62.0
64.0			7.8	8.0	8.2	6.8	4.6	3.9	2.6	2.0	64.0
66.0			7.2	7.4	7.6	6.7	4.5	3.8	2.5	2.0	66.0
68.0			66.5m× 7.1	6.8	7.1	6.6	4.4	3.8	2.4	1.9	68.0
70.0					6.7	6.6	4.3	3.8	2.3	1.9	70.0
72.0					6.2	6.4	4.3	3.7	2.3	1.9	72.0
74.0					72.5m× 6.1	5.9	4.2	3.7	2.2	1.8	74.0
76.0							4.1	3.7	2.2	1.8	76.0
78.0							77.5m× 4.1	3.7	2.1	1.8	78.0
80.0								3.7	2.1	1.8	80.0
82.0									2.0	1.8	82.0
84.0									83.0m× 2.0	1.8	84.0
86.0										1.8	86.0
88.0											88.0
90.0											90.0
92.0											92.0
94.0											94.0
96.0											96.0
No. of Part line	2	2	2	1	1	1	1	1	1	1	No. of Part line

Note:

- 1.RATED LOADS ARE ACCORDING TO EN13000 , AND FOR FULL SWINGING OF 360° ON A FIRM LEVEL GROUND.
 - 2.THE WORKING RADIUS REFERS TO THE HORIZONTAL DISTANCE FROM THE CENTER OF SWINGING TO THE HOOK AXIS.
 - 3.THE ACTUAL LIFTING LOAD IS OBTAINED BY SUBTRACTING THE MASS OF ALL LIFTING EQUIPMENT SUCH AS THE MAIN MAIN HOOK,AUX. HOOK,ETC. FROM THE VALUES GIVEN IN THIS TABLE.
- 250t Hook...3.3t 135t Hook...2.4t 90t Hook...1.6t 35t Hook...1.1t
 200t Hook...3.0t 125t Hook...2.4t 60t Hook...1.4t 13.5t Hook...0.6t

CRANE JIB RATED LIFTING LOADS

WITH STANDARD BOOM(92.0t Counterweight + 19.0t Carbody weight)

unit: ton

Boom length(m)	57.0										Boom length(m)
Jib length(m)	13.0		19.0		25.0		31.0		37.0		Jib length(m)
Jib offset angle	10°	30°	10°	30°	10°	30°	10°	30°	10°	30°	Jib offset angle
Working radius (m)											Working radius (m)
14.0											14.0
16.0	16.5m× 27.0										16.0
18.0	27.0		18.5m× 25.0								18.0
20.0	27.0	21.8	25.0		20.5m× 13.5						20.0
22.0	27.0	20.9	24.4		13.5		22.5m× 8.3				22.0
24.0	27.0	20.1	23.9	24.5m× 13.5	13.2		8.1		25.0m× 5.1		24.0
26.0	27.0	19.3	23.3	13.5	12.9		7.8		5.0		26.0
28.0	27.0	18.6	22.8	13.5	12.5	9.5	7.6		4.8		28.0
30.0	26.4	18.0	21.6	13.5	12.2	9.3	7.3		4.6		30.0
32.0	24.0	17.5	20.4	13.1	11.9	9.2	7.1	5.3	4.5		32.0
34.0	21.9	16.9	19.4	12.7	11.6	9.0	6.9	5.1	4.3		34.0
36.0	20.1	16.4	18.5	12.3	11.3	8.8	6.7	5.0	4.1	3.0	36.0
38.0	18.4	16.0	17.6	11.9	11.0	8.7	6.5	4.9	4.0	2.9	38.0
40.0	17.0	15.6	16.9	11.6	10.8	8.5	6.3	4.8	3.8	2.8	40.0
42.0	15.7	15.2	16.2	11.3	10.6	8.4	6.1	4.7	3.7	2.7	42.0
44.0	14.6	14.8	15.1	11.0	10.3	8.3	6.0	4.6	3.6	2.6	44.0
46.0	13.5	13.9	14.0	10.7	10.1	8.2	5.8	4.5	3.5	2.6	46.0
48.0	12.5	12.9	13.1	10.5	9.9	8.1	5.7	4.4	3.4	2.5	48.0
50.0	11.7	12.0	12.2	10.2	9.7	8.0	5.5	4.4	3.2	2.4	50.0
52.0	10.9	11.2	11.4	10.0	9.5	7.8	5.4	4.3	3.1	2.4	52.0
54.0	10.1	10.4	10.6	9.8	9.4	7.6	5.2	4.2	3.0	2.3	54.0
56.0	9.4	9.7	9.9	9.6	9.2	7.5	5.1	4.1	3.0	2.3	56.0
58.0	8.7	8.9	9.3	9.5	9.1	7.3	5.0	4.1	2.9	2.2	58.0
60.0	8.0	8.3	8.6	9.0	8.9	7.2	4.9	4.0	2.8	2.2	60.0
62.0	7.4	7.6	8.0	8.3	8.4	7.0	4.8	4.0	2.7	2.1	62.0
64.0	63.5m× 7.0	7.0	7.4	7.7	7.9	6.9	4.7	3.9	2.6	2.1	64.0
66.0			6.9	7.1	7.3	6.8	4.6	3.9	2.5	2.0	66.0
68.0			6.4	6.6	6.8	6.7	4.5	3.8	2.5	2.0	68.0
70.0			69.0m× 6.1	6.0	6.3	6.6	4.4	3.8	2.4	1.9	70.0
72.0				70.5m× 5.9	5.9	6.2	4.4	3.8	2.3	1.9	72.0
74.0					5.5	5.7	4.3	3.7	2.3	1.9	74.0
76.0					75.0m× 5.3	5.2	4.2	3.7	2.2	1.8	76.0
78.0						76.5m× 5.1	4.2	3.7	2.2	1.8	78.0
80.0							4.1	3.7	2.1	1.8	80.0
82.0							80.5m× 4.1	3.7	2.1	1.8	82.0
84.0								82.5m× 3.7	2.0	1.8	84.0
86.0									85.5m× 2.0	1.8	86.0
88.0										1.8	88.0
90.0										88.5m× 1.8	90.0
92.0											92.0
94.0											94.0
96.0											96.0
No. of Part line	2	2	2	1	1	1	1	1	1	1	No. of Part line

Note:

- 1.RATED LOADS ARE ACCORDING TO EN13000 , AND FOR FULL SWINGING OF 360° ON A FIRM LEVEL GROUND.
 - 2.THE WORKING RADIUS REFERS TO THE HORIZONTAL DISTANCE FROM THE CENTER OF SWINGING TO THE HOOK AXIS.
 - 3.THE ACTUAL LIFTING LOAD IS OBTAINED BY SUBTRACTING THE MASS OF ALL LIFTING EQUIPMENT SUCH AS THE MAIN MAIN HOOK,AUX. HOOK,ETC. FROM THE VALUES GIVEN IN THIS TABLE.
- 250t Hook...3.3t 135t Hook...2.4t 90t Hook...1.6t 35t Hook...1.1t
 200t Hook...3.0t 125t Hook...2.4t 60t Hook...1.4t 13.5t Hook...0.6t

CRANE JIB RATED LIFTING LOADS

WITH STANDARD BOOM(92.0t Counterweight + 19.0t Carbody weight)

unit: ton

Boom length(m)	60.0										Boom length(m)
Jib length(m)	13.0		19.0		25.0		31.0		37.0		Jib length(m)
Jib offset angle	10°	30°	10°	30°	10°	30°	10°	30°	10°	30°	Jib offset angle
Working radius (m)											Working radius (m)
14.0											14.0
16.0	17.0m× 27.0										16.0
18.0	27.0		19.5m× 25.0								18.0
20.0	27.0	21.0m× 21.6	25.0		21.0m× 13.5						20.0
22.0	27.0	21.1	24.6		13.5		23.0m× 8.3				22.0
24.0	27.0	20.3	24.1	25.0m× 13.5	13.3		8.2		25.5m× 5.1		24.0
26.0	27.0	19.6	23.5	13.5	13.0		7.9		5.1		26.0
28.0	27.0	18.9	23.0	13.5	12.6	28.5m× 9.5	7.6		4.9		28.0
30.0	26.1	18.3	22.1	13.5	12.3	9.4	7.4		4.7		30.0
32.0	23.7	17.7	21.0	13.2	12.0	9.2	7.2	32.5m× 5.3	4.5		32.0
34.0	21.7	17.2	20.0	12.8	11.7	9.1	7.0	5.2	4.4		34.0
36.0	19.8	16.7	19.0	12.4	11.4	8.9	6.8	5.1	4.2	36.5m× 3.0	36.0
38.0	18.2	16.3	18.2	12.1	11.2	8.8	6.6	5.0	4.1	2.9	38.0
40.0	16.8	15.9	17.4	11.8	10.9	8.6	6.4	4.9	3.9	2.8	40.0
42.0	15.5	15.5	16.1	11.4	10.7	8.5	6.2	4.8	3.8	2.7	42.0
44.0	14.3	14.8	14.9	11.2	10.5	8.4	6.1	4.7	3.7	2.7	44.0
46.0	13.3	13.7	13.8	10.9	10.3	8.2	5.9	4.6	3.5	2.6	46.0
48.0	12.3	12.7	12.8	10.6	10.1	8.1	5.8	4.5	3.4	2.5	48.0
50.0	11.4	11.8	12.0	10.4	9.9	8.0	5.6	4.4	3.3	2.5	50.0
52.0	10.6	11.0	11.1	10.2	9.7	7.9	5.5	4.3	3.2	2.4	52.0
54.0	9.8	10.2	10.4	10.0	9.5	7.8	5.3	4.3	3.1	2.3	54.0
56.0	9.1	9.4	9.7	9.8	9.4	7.6	5.2	4.2	3.0	2.3	56.0
58.0	8.4	8.7	9.0	9.4	9.2	7.4	5.1	4.1	2.9	2.2	58.0
60.0	7.8	8.0	8.3	8.7	8.8	7.3	5.0	4.1	2.8	2.2	60.0
62.0	7.2	7.4	7.7	8.1	8.2	7.2	4.9	4.0	2.8	2.1	62.0
64.0	6.6	6.8	7.1	7.5	7.6	7.0	4.8	4.0	2.7	2.1	64.0
66.0	6.1	6.2	6.6	6.9	7.1	6.9	4.7	3.9	2.6	2.0	66.0
68.0		67.0m× 5.9	6.1	6.4	6.6	6.8	4.6	3.9	2.5	2.0	68.0
70.0			5.6	5.8	6.1	6.4	4.5	3.8	2.5	2.0	70.0
72.0			71.5m× 5.3	5.3	5.6	5.9	4.4	3.8	2.4	1.9	72.0
74.0				73.0m× 5.1	5.2	5.5	4.4	3.8	2.3	1.9	74.0
76.0					4.8	5.0	4.3	3.7	2.3	1.9	76.0
78.0					77.5m× 4.5	4.6	4.2	3.7	2.2	1.8	78.0
80.0						79.0m× 4.3	4.2	3.7	2.2	1.8	80.0
82.0							4.0	3.7	2.1	1.8	82.0
84.0							83.0m× 3.8	3.7	2.1	1.8	84.0
86.0								85.0m× 3.6	2.0	1.8	86.0
88.0									2.0	1.8	88.0
90.0									89.0m× 2.0	1.8	90.0
92.0										91.0m× 1.8	92.0
94.0											94.0
96.0											96.0
No. of Part line	2	2	2	1	1	1	1	1	1	1	No. of Part line

Note:

- 1.RATED LOADS ARE ACCORDING TO EN13000 , AND FOR FULL SWINGING OF 360° ON A FIRM LEVEL GROUND.
 - 2.THE WORKING RADIUS REFERS TO THE HORIZONTAL DISTANCE FROM THE CENTER OF SWINGING TO THE HOOK AXIS.
 - 3.THE ACTUAL LIFTING LOAD IS OBTAINED BY SUBTRACTING THE MASS OF ALL LIFTING EQUIPMENT SUCH AS THE MAIN MAIN HOOK,AUX. HOOK,ETC. FROM THE VALUES GIVEN IN THIS TABLE.
- 250t Hook...3.3t 135t Hook...2.4t 90t Hook...1.6t 35t Hook...1.1t
 200t Hook...3.0t 125t Hook...2.4t 60t Hook...1.4t 13.5t Hook...0.6t

CRANE JIB RATED LIFTING LOADS

WITH STANDARD BOOM(92.0t Counterweight + 19.0t Carbody weight)

unit: ton

Boom length(m)	63.0										Boom length(m)
Jib length(m)	13.0		19.0		25.0		31.0		37.0		Jib length(m)
Jib offset angle	10°	30°	10°	30°	10°	30°	10°	30°	10°	30°	Jib offset angle
Working radius (m)											Working radius (m)
14.0											14.0
16.0	17.5m× 27.0										16.0
18.0	27.0										18.0
20.0	27.0	21.5m× 21.6	25.0		21.5m× 13.5						20.0
22.0	27.0	21.4	24.8		13.5						22.0
24.0	27.0	20.6	24.3	25.5m× 13.5	13.5		8.2				24.0
26.0	27.0	19.9	23.7	13.5	13.1		8.0		5.1		26.0
28.0	27.0	19.2	23.2	13.5	12.8	29.0m× 9.5	7.7		4.9		28.0
30.0	25.9	18.6	22.7	13.5	12.4	9.4	7.5		4.8		30.0
32.0	23.5	18.0	21.5	13.4	12.1	9.3	7.3	33.0m× 5.3	4.6		32.0
34.0	21.4	17.5	20.5	13.0	11.9	9.1	7.1	5.2	4.4		34.0
36.0	19.6	17.0	19.5	12.6	11.6	9.0	6.9	5.1	4.3	37.0m× 3.0	36.0
38.0	18.0	16.5	18.6	12.3	11.3	8.8	6.7	5.0	4.1	2.9	38.0
40.0	16.6	16.1	17.2	11.9	11.1	8.7	6.5	4.9	4.0	2.8	40.0
42.0	15.3	15.7	15.9	11.6	10.8	8.5	6.3	4.8	3.9	2.8	42.0
44.0	14.1	14.6	14.7	11.3	10.6	8.4	6.1	4.7	3.7	2.7	44.0
46.0	13.0	13.5	13.6	11.1	10.4	8.3	6.0	4.6	3.6	2.6	46.0
48.0	12.1	12.5	12.6	10.8	10.2	8.2	5.8	4.5	3.5	2.6	48.0
50.0	11.2	11.6	11.7	10.6	10.0	8.1	5.7	4.4	3.4	2.5	50.0
52.0	10.4	10.8	10.9	10.4	9.8	8.0	5.6	4.4	3.3	2.4	52.0
54.0	9.6	10.0	10.2	10.2	9.7	7.9	5.4	4.3	3.2	2.4	54.0
56.0	8.8	9.2	9.4	9.9	9.5	7.7	5.3	4.2	3.1	2.3	56.0
58.0	8.1	8.5	8.7	9.2	9.2	7.6	5.2	4.2	3.0	2.3	58.0
60.0	7.5	7.8	8.1	8.5	8.5	7.4	5.1	4.1	2.9	2.2	60.0
62.0	6.9	7.2	7.5	7.9	7.9	7.3	5.0	4.0	2.8	2.2	62.0
64.0	6.3	6.6	6.9	7.3	7.3	7.2	4.9	4.0	2.8	2.1	64.0
66.0	5.8	6.0	6.4	6.7	6.8	7.0	4.8	3.9	2.7	2.1	66.0
68.0	5.3	5.5	5.9	6.1	6.3	6.8	4.7	3.9	2.6	2.0	68.0
70.0	68.5m× 5.2	69.5m× 5.1	5.4	5.6	5.8	6.2	4.6	3.9	2.5	2.0	70.0
72.0			4.9	5.1	5.4	5.7	4.5	3.8	2.5	2.0	72.0
74.0			4.4	4.6	4.9	5.3	4.4	3.8	2.4	1.9	74.0
76.0				75.5m× 4.3	4.5	4.8	4.4	3.8	2.4	1.9	76.0
78.0					4.1	4.4	4.3	3.7	2.3	1.9	78.0
80.0					3.7	3.9	4.1	3.7	2.2	1.8	80.0
82.0						81.5m× 3.6	3.7	3.7	2.2	1.8	82.0
84.0							3.3	3.7	2.1	1.8	84.0
86.0							3.0	3.2	2.1	1.8	86.0
88.0								87.5m× 3.0	2.0	1.8	88.0
90.0									2.0	1.8	90.0
92.0									91.5m× 2.0	1.8	92.0
94.0										93.5m× 1.8	94.0
96.0											96.0
No. of Part line	2	2	2	1	1	1	1	1	1	1	No. of Part line

Note:

- 1.RATED LOADS ARE ACCORDING TO EN13000 , AND FOR FULL SWINGING OF 360° ON A FIRM LEVEL GROUND.
 - 2.THE WORKING RADIUS REFERS TO THE HORIZONTAL DISTANCE FROM THE CENTER OF SWINGING TO THE HOOK AXIS.
 - 3.THE ACTUAL LIFTING LOAD IS OBTAINED BY SUBTRACTING THE MASS OF ALL LIFTING EQUIPMENT SUCH AS THE MAIN MAIN HOOK,AUX. HOOK,ETC. FROM THE VALUES GIVEN IN THIS TABLE.
- 250t Hook...3.3t 135t Hook...2.4t 90t Hook...1.6t 35t Hook...1.1t
 200t Hook...3.0t 125t Hook...2.4t 60t Hook...1.4t 13.5t Hook...0.6t

CRANE JIB RATED LIFTING LOADS

WITH STANDARD BOOM(92.0t Counterweight + 19.0t Carbody weight)

unit: ton

Boom length(m)	66.0										Boom length(m)
Jib length(m)	13.0		19.0		25.0		31.0		37.0		Jib length(m)
Jib offset angle	10°	30°	10°	30°	10°	30°	10°	30°	10°	30°	Jib offset angle
Working radius (m)											Working radius (m)
14.0											14.0
16.0											16.0
18.0	27.0										18.0
20.0	27.0		20.5m× 25.0								20.0
22.0	27.0	21.6	25.0		13.5						22.0
24.0	27.0	20.8	24.4		13.5		24.5m× 8.3				24.0
26.0	27.0	20.1	23.9	13.5	13.2		8.1		26.5m× 5.1		26.0
28.0	27.0	19.4	23.4	13.5	12.9		7.8		5.0		28.0
30.0	25.7	18.8	22.9	13.5	12.6	9.5	7.6		4.8		30.0
32.0	23.3	18.3	22.1	13.5	12.3	9.3	7.4	33.5m× 5.3	4.6		32.0
34.0	21.2	17.7	21.0	13.2	12.0	9.2	7.1	5.3	4.5		34.0
36.0	19.3	17.3	20.0	12.8	11.7	9.0	6.9	5.1	4.3	37.5m× 3.0	36.0
38.0	17.7	16.8	18.4	12.4	11.5	8.9	6.8	5.0	4.2	2.9	38.0
40.0	16.3	16.4	16.9	12.1	11.2	8.7	6.6	4.9	4.0	2.9	40.0
42.0	15.0	15.6	15.6	11.8	11.0	8.6	6.4	4.8	3.9	2.8	42.0
44.0	13.8	14.4	14.4	11.5	10.8	8.5	6.2	4.7	3.8	2.7	44.0
46.0	12.8	13.3	13.4	11.2	10.5	8.4	6.1	4.7	3.7	2.7	46.0
48.0	11.8	12.3	12.4	11.0	10.3	8.3	5.9	4.6	3.6	2.6	48.0
50.0	10.9	11.4	11.5	10.7	10.2	8.2	5.8	4.5	3.5	2.5	50.0
52.0	10.0	10.5	10.7	10.5	10.0	8.1	5.7	4.4	3.3	2.5	52.0
54.0	9.2	9.7	9.9	10.3	9.8	8.0	5.5	4.3	3.3	2.4	54.0
56.0	8.5	8.9	9.1	9.7	9.6	7.8	5.4	4.3	3.2	2.4	56.0
58.0	7.8	8.2	8.4	9.0	8.9	7.7	5.3	4.2	3.1	2.3	58.0
60.0	7.2	7.5	7.7	8.3	8.2	7.5	5.2	4.1	3.0	2.3	60.0
62.0	6.6	6.9	7.1	7.6	7.6	7.4	5.1	4.1	2.9	2.2	62.0
64.0	6.0	6.3	6.6	7.0	7.0	7.3	5.0	4.0	2.8	2.2	64.0
66.0	5.4	5.7	6.0	6.4	6.5	7.0	4.9	4.0	2.7	2.1	66.0
68.0	4.9	5.1	5.5	5.9	6.0	6.5	4.8	3.9	2.7	2.1	68.0
70.0	4.4	4.6	5.0	5.4	5.5	6.0	4.7	3.9	2.6	2.0	70.0
72.0		4.1	4.5	4.8	5.0	5.5	4.6	3.9	2.5	2.0	72.0
74.0			4.1	4.3	4.6	5.0	4.5	3.8	2.5	2.0	74.0
76.0			3.6	3.8	4.1	4.5	4.5	3.8	2.4	1.9	76.0
78.0			77.5m× 3.3	3.4	3.7	4.1	4.1	3.8	2.4	1.9	78.0
80.0					3.3	3.6	3.7	3.7	2.3	1.9	80.0
82.0					2.9	3.2	3.4	3.7	2.2	1.8	82.0
84.0					83.0m× 2.8	2.8	3.0	3.4	2.2	1.8	84.0
86.0							2.6	3.0	2.1	1.8	86.0
88.0							2.3	2.6	2.1	1.8	88.0
90.0							89.0m× 2.2	2.2	2.1	1.8	90.0
92.0								90.5m× 2.1	2.0	1.8	92.0
94.0									1.7	1.8	94.0
96.0										1.7	96.0
No. of Part line	2	2	2	1	1	1	1	1	1	1	No. of Part line

Note:

- 1.RATED LOADS ARE ACCORDING TO EN13000 , AND FOR FULL SWINGING OF 360° ON A FIRM LEVEL GROUND.
 - 2.THE WORKING RADIUS REFERS TO THE HORIZONTAL DISTANCE FROM THE CENTER OF SWINGING TO THE HOOK AXIS.
 - 3.THE ACTUAL LIFTING LOAD IS OBTAINED BY SUBTRACTING THE MASS OF ALL LIFTING EQUIPMENT SUCH AS THE MAIN MAIN HOOK,AUX. HOOK,ETC. FROM THE VALUES GIVEN IN THIS TABLE.
- 250t Hook...3.3t 135t Hook...2.4t 90t Hook...1.6t 35t Hook...1.1t
 200t Hook...3.0t 125t Hook...2.4t 60t Hook...1.4t 13.5t Hook...0.6t

CRANE JIB RATED LIFTING LOADS

WITH STANDARD BOOM(92.0t Counterweight + 19.0t Carbody weight)

unit : ton

Boom length(m)	69.0										Boom length(m)
Jib length(m)	13.0		19.0		25.0		31.0		37.0		Jib length(m)
Jib offset angle	10°	30°	10°	30°	10°	30°	10°	30°	10°	30°	Jib offset angle
Working radius (m)											Working radius (m)
14.0											14.0
16.0											16.0
18.0	18.5m× 27.0										18.0
20.0	27.0		21.0m× 25.0								20.0
22.0	27.0	22.5m× 21.6	25.0		23.0m× 13.5						22.0
24.0	27.0	21.0	24.6		13.5		25.0m× 8.3				24.0
26.0	27.0	20.3	24.1	26.5m× 13.5	13.3		8.1		27.0m× 5.2		26.0
28.0	27.0	19.7	23.6	13.5	13.0		7.9		5.1		28.0
30.0	25.5	19.1	23.1	13.5	12.7	30.5m× 9.5	7.6		4.9		30.0
32.0	23.1	18.5	22.6	13.5	12.4	9.4	7.4		4.7		32.0
34.0	21.0	18.0	21.5	13.3	12.1	9.2	7.2	5.3	4.5		34.0
36.0	19.1	17.5	19.8	13.0	11.8	9.1	7.0	5.2	4.4		36.0
38.0	17.5	17.1	18.2	12.6	11.6	8.9	6.8	5.1	4.2	3.0	38.0
40.0	16.1	16.6	16.7	12.3	11.3	8.8	6.7	5.0	4.1	2.9	40.0
42.0	14.8	15.4	15.4	12.0	11.1	8.7	6.5	4.9	4.0	2.8	42.0
44.0	13.6	14.2	14.2	11.7	10.9	8.5	6.3	4.8	3.9	2.7	44.0
46.0	12.5	13.1	13.1	11.4	10.7	8.4	6.2	4.7	3.7	2.7	46.0
48.0	11.6	12.1	12.2	11.1	10.5	8.3	6.0	4.6	3.6	2.6	48.0
50.0	10.6	11.2	11.3	10.9	10.3	8.2	5.9	4.5	3.5	2.6	50.0
52.0	9.8	10.3	10.4	10.7	10.1	8.1	5.8	4.5	3.4	2.5	52.0
54.0	9.0	9.4	9.6	10.3	9.9	8.0	5.6	4.4	3.3	2.4	54.0
56.0	8.2	8.7	8.8	9.5	9.3	7.9	5.5	4.3	3.2	2.4	56.0
58.0	7.5	7.9	8.1	8.7	8.6	7.8	5.4	4.3	3.1	2.3	58.0
60.0	6.9	7.3	7.5	8.0	8.0	7.7	5.3	4.2	3.0	2.3	60.0
62.0	6.3	6.6	6.9	7.4	7.3	7.5	5.2	4.1	3.0	2.2	62.0
64.0	5.7	6.0	6.3	6.8	6.8	7.4	5.1	4.1	2.9	2.2	64.0
66.0	5.1	5.4	5.8	6.2	6.2	6.8	5.0	4.0	2.8	2.1	66.0
68.0	4.6	4.9	5.2	5.6	5.7	6.3	4.9	4.0	2.7	2.1	68.0
70.0	4.1	4.3	4.7	5.1	5.2	5.8	4.8	3.9	2.7	2.1	70.0
72.0	3.6	3.8	4.2	4.6	4.7	5.3	4.7	3.9	2.6	2.0	72.0
74.0	3.2	3.3	3.8	4.1	4.3	4.8	4.6	3.9	2.5	2.0	74.0
76.0		75.0m× 3.1	3.3	3.6	3.8	4.3	4.3	3.8	2.5	2.0	76.0
78.0			2.9	3.1	3.4	3.8	3.8	3.8	2.4	1.9	78.0
80.0			2.5	2.7	3.0	3.4	3.4	3.8	2.4	1.9	80.0
82.0				81.0m× 2.5	2.6	2.9	3.1	3.5	2.3	1.9	82.0
84.0					2.3	2.5	2.7	3.1	2.3	1.8	84.0
86.0					85.0m× 2.1	2.1	2.4	2.7	2.2	1.8	86.0
88.0							2.0	2.4	2.2	1.8	88.0
90.0							1.7	2.0	2.0	1.8	90.0
92.0											92.0
94.0											94.0
96.0											96.0
No. of Part line	2	2	2	1	1	1	1	1	1	1	No. of Part line

Note:

- 1.RATED LOADS ARE ACCORDING TO EN13000 , AND FOR FULL SWINGING OF 360° ON A FIRM LEVEL GROUND.
- 2.THE WORKING RADIUS REFERS TO THE HORIZONTAL DISTANCE FROM THE CENTER OF SWINGING TO THE HOOK AXIS.
- 3.THE ACTUAL LIFTING LOAD IS OBTAINED BY SUBTRACTING THE MASS OF ALL LIFTING EQUIPMENT SUCH AS THE MAIN MAIN HOOK,AUX. HOOK,ETC. FROM THE VALUES GIVEN IN THIS TABLE.

250t Hook...3.3t 135t Hook...2.4t 90t Hook...1.6t 35t Hook...1.1t
 200t Hook...3.0t 125t Hook...2.4t 60t Hook...1.4t 13.5t Hook...0.6t

CRANE JIB RATED LIFTING LOADS

WITH STANDARD BOOM(92.0t Counterweight + 19.0t Carbody weight)

unit: ton

Boom length(m)	72.0										Boom length(m)
Jib length(m)	13.0		19.0		25.0		31.0		37.0		Jib length(m)
Jib offset angle	10°	30°	10°	30°	10°	30°	10°	30°	10°	30°	Jib offset angle
Working radius (m)											Working radius (m)
14.0											14.0
16.0											16.0
18.0	19.0m× 27.0										18.0
20.0	27.0		21.5m× 25.0								20.0
22.0	27.0	23.0m× 21.6	25.0		23.5m× 13.5						22.0
24.0	27.0	21.2	24.8		13.5		25.5m× 8.3				24.0
26.0	27.0	20.6	24.3	27.0m× 13.5	13.4		8.2		27.5m× 5.2		26.0
28.0	27.0	19.9	23.8	13.5	13.1		8.0		5.1		28.0
30.0	25.2	19.3	23.3	13.5	12.8	31.0m× 9.5	7.7		4.9		30.0
32.0	22.8	18.8	22.9	13.5	12.5	9.4	7.5		4.8		32.0
34.0	20.7	18.2	21.5	13.5	12.2	9.3	7.3	34.5m× 5.3	4.6		34.0
36.0	18.9	17.7	19.6	13.1	12.0	9.1	7.1	5.2	4.4		36.0
38.0	17.3	17.3	18.0	12.8	11.7	9.0	6.9	5.1	4.3	38.5m× 3.0	38.0
40.0	15.8	16.6	16.5	12.4	11.5	8.8	6.7	5.0	4.2	2.9	40.0
42.0	14.5	15.2	15.2	12.1	11.2	8.7	6.6	4.9	4.0	2.8	42.0
44.0	13.4	14.0	14.0	11.8	11.0	8.6	6.4	4.8	3.9	2.8	44.0
46.0	12.3	12.9	12.9	11.6	10.8	8.5	6.3	4.7	3.8	2.7	46.0
48.0	11.3	11.9	11.9	11.3	10.6	8.4	6.1	4.7	3.7	2.6	48.0
50.0	10.4	11.0	11.0	11.1	10.4	8.3	6.0	4.6	3.6	2.6	50.0
52.0	9.5	10.0	10.1	10.8	10.2	8.2	5.8	4.5	3.5	2.5	52.0
54.0	8.7	9.2	9.3	10.1	9.8	8.1	5.7	4.4	3.4	2.5	54.0
56.0	7.9	8.4	8.6	9.2	9.1	8.0	5.6	4.4	3.3	2.4	56.0
58.0	7.2	7.7	7.9	8.5	8.4	7.9	5.5	4.3	3.2	2.4	58.0
60.0	6.6	7.0	7.2	7.8	7.7	7.8	5.4	4.2	3.1	2.3	60.0
62.0	6.0	6.4	6.6	7.1	7.1	7.6	5.2	4.2	3.0	2.3	62.0
64.0	5.4	5.8	6.0	6.5	6.5	7.2	5.1	4.1	2.9	2.2	64.0
66.0	4.8	5.2	5.5	5.9	6.0	6.6	5.0	4.1	2.9	2.2	66.0
68.0	4.3	4.6	4.9	5.4	5.4	6.0	5.0	4.0	2.8	2.1	68.0
70.0	3.8	4.0	4.4	4.8	4.9	5.5	4.9	4.0	2.7	2.1	70.0
72.0	3.3	3.5	3.9	4.3	4.4	5.0	4.8	3.9	2.7	2.1	72.0
74.0	2.8	3.0	3.5	3.8	4.0	4.5	4.4	3.9	2.6	2.0	74.0
76.0	2.4	2.6	3.0	3.3	3.5	4.0	3.9	3.9	2.5	2.0	76.0
78.0	77.0m× 2.2	77.0m× 2.3	2.6	2.9	3.1	3.6	3.5	3.8	2.5	2.0	78.0
80.0			2.2	2.4	2.7	3.1	3.1	3.7	2.4	1.9	80.0
82.0			1.8	2.0	2.3	2.7	2.7	3.3	2.4	1.9	82.0
84.0				83.0m× 1.8	2.0	2.3	2.4	2.9	2.3	1.9	84.0
86.0					1.6	1.9	2.0	2.5	2.3	1.8	86.0
88.0							1.7	2.1	2.0	1.8	88.0
90.0								1.7	1.7	1.8	90.0
92.0											92.0
94.0											94.0
96.0											96.0
No. of Part line	2	2	2	1	1	1	1	1	1	1	No. of Part line

Note:

- 1.RATED LOADS ARE ACCORDING TO EN13000 , AND FOR FULL SWINGING OF 360° ON A FIRM LEVEL GROUND.
 - 2.THE WORKING RADIUS REFERS TO THE HORIZONTAL DISTANCE FROM THE CENTER OF SWINGING TO THE HOOK AXIS.
 - 3.THE ACTUAL LIFTING LOAD IS OBTAINED BY SUBTRACTING THE MASS OF ALL LIFTING EQUIPMENT SUCH AS THE MAIN MAIN HOOK,AUX. HOOK,ETC. FROM THE VALUES GIVEN IN THIS TABLE.
- 250t Hook...3.3t 135t Hook...2.4t 90t Hook...1.6t 35t Hook...1.1t
 200t Hook...3.0t 125t Hook...2.4t 60t Hook...1.4t 13.5t Hook...0.6t